



Long-term fit.  
Not a short-term fix.



KENSINGTON | STONE  
Executive Talent

Company Backgrounder

There's no such thing as a candidate who's "good enough."

## Company Backgrounder

### SYNOPSIS

We are a retained search firm serving Global 2000 companies around the world. We have conducted over 400 executive searches since 1989. We believe that a successful, long-term executive placement comes from a cultural and organizational fit between the candidate and the company.

### SERVICES

Retained search, position evaluation, development of specification and job descriptions, in-person interviews, comprehensive candidate evaluations, reference checks, counsel and assistance with candidate selection, compensation negotiations and transitioning.

### HEADQUARTERS

Irvine, California, USA

### COMPANIES SERVED

Air New Zealand, Clorox, Disney, General Mills, Harley Davidson, JetBlue Airways, LAN Chile, Metricom, National Hot Rod Association, Nissan, Seagate, UCLA, Virgin, Von's, Western Warehouse, and many more

### PHILOSOPHY

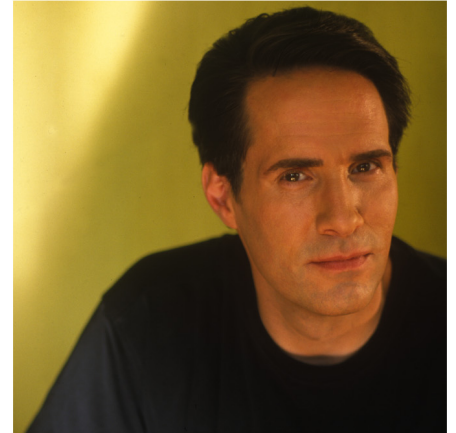
We are dedicated to finding the best, most holistic fit. We share what we've learned with our clients, helping them become better at identifying stars.

### SPECIALTIES

Airlines, travel, consumer packaged goods, entertainment

### TESTIMONIALS

Testimonials from Virgin America, JetBlue, PeopleInk, Air New Zealand, EFL and Toys 'R' Us available upon request, or see our website at [www.kensington-stone.com](http://www.kensington-stone.com).



## Kensington Stone

4521 CAMPUS DRIVE, #200  
IRVINE, CALIFORNIA, USA 92612

TEL +1 949 457-9300  
EMAIL [info@kensington-stone.com](mailto:info@kensington-stone.com)